

ADVANCING VALUE-BASED CARE: WHY TECHNOLOGY MATTERS



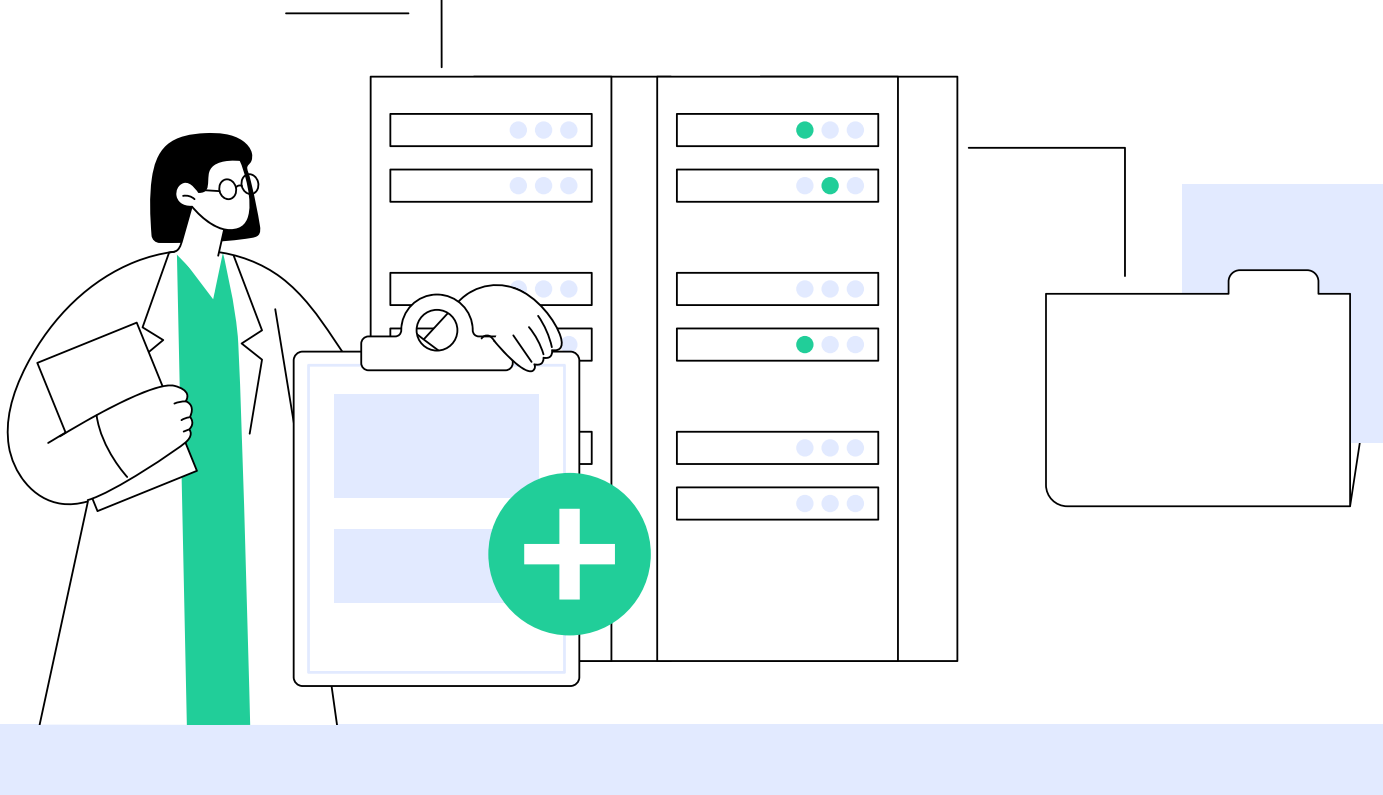
Value-based care (VBC) focuses on delivering proactive, personalized and person-centered care to improve resident health outcomes and increase operational returns.

The Yardi Senior Living Suite is designed to help you deliver that care — all from one integrated platform.

With the Centers for Medicare & Medicaid Services (CMS) aiming to have 100% of Medicare and the majority of Medicaid beneficiaries tied to VBC by 2030¹, the time to implement VBC is now.

SEE HOW THE YARDI SENIOR LIVING SUITE SUPPORTS VBC

- ✓ Enhance communications among residents, families and the entire care team
- ✓ Gather data-driven insights to identify at-risk residents and offer preventative care
- ✓ Empower staff with interoperable workflows, personalized to meet resident needs
- ✓ Support community wellness programs that boost resident engagement
- ✓ View actionable trends to ensure comprehensive population health management
- ✓ Access a digital signature workflow to enable quick adaptation of care plans
- ✓ Use health care data to report on resident status during transitions of care
- ✓ Participate in value-based care reimbursement models with ease
- ✓ Share a cohesive picture of resident health with physicians, health systems and more
- ✓ Connect to a thriving ecosystem of monitoring and fall detection systems to supplement staff observation and reduce adverse events



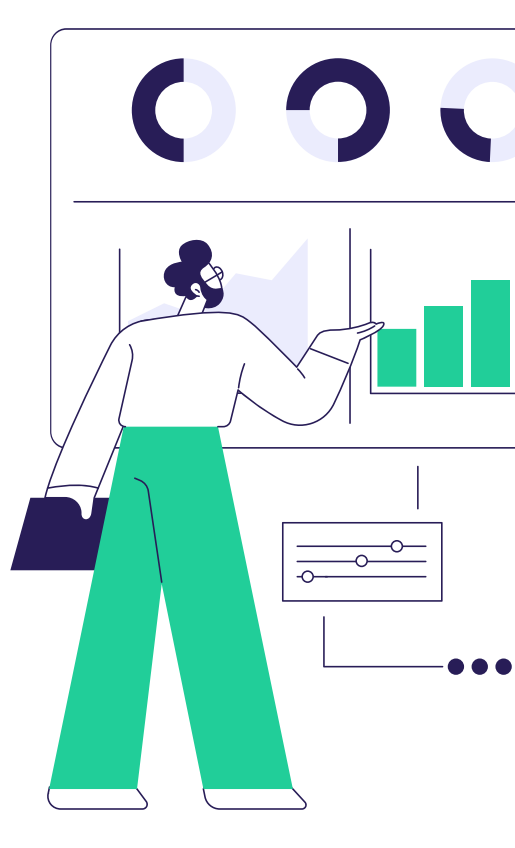
“ Providers need to have integrated technology in place that includes point-of-care charting, fully digital clinical record keeping and business intelligence that provides predictive population health insights and more. ”

FIL SOUTHERLAND
Director of Health Care Solutions
Yardi

TAKE A CLOSER LOOK AT OUR FULLY INTEGRATED TOOLS

Enable real-time information sharing with Yardi EHR

- ✓ Access centralized record keeping, interoperable workflows, advanced clinical reporting and instant access to health information at the point of care
- ✓ Quickly adapt care plans thanks to electronic signature functionality
- ✓ Improve care outcomes with unparalleled features and integrations, including secure integration to Yardi eMAR, our comprehensive medication management solution
- ✓ Enable person-centered care through care-preference capture and automatic billing-cost capture



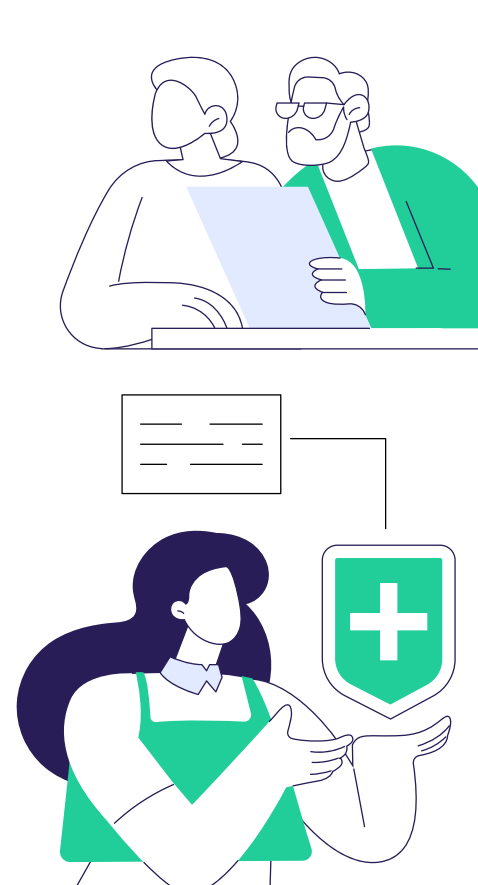
Assess clinical trends and population health with Yardi Senior IQ

- ✓ Track clinical trends, identify residents at risk, pinpoint problems and improve protocols with resident health data flowing automatically from Yardi EHR
- ✓ View every piece of data in attractive, sharable dashboards built with over 700 pre-configured measures
- ✓ Save hours searching through spreadsheets for information critical to improving resident health outcomes and managing care transitions
- ✓ Mitigate risk and ensure shift assignments meet resident care requirements with a comprehensive staffing analysis tool



Improve resident engagement with RentCafe Wellness

- ✓ Maximize efficiency with one platform for marketing wellness activities
- ✓ Monitor resident attendance and behavior changes
- ✓ Display customized, resident-facing calendars to announce upcoming wellness opportunities, sharable in RentCafe Senior Living Portal
- ✓ Boost productivity among community staff with a single platform for managing calendar content, design, publication, activity registration and attendance
- ✓ Enable residents and families to sign up for activities, manage registrations and submit online payments



“ There’s a tremendous amount of benefit with Yardi — having **one landing place where we have access to all these different modules.** ”

NICK BYRD
Chief Financial Officer
Vitality Living

WE’RE HERE TO HELP

The Yardi Senior Living Suite combines resident care, marketing, sales, finance, business intelligence, pharmacy, operations and more on a cloud-hosted, HIPAA and SOX-compliant software platform.

Reach out for more information on how this single connected solution supports VBC.