

Yardi Investment Suite



Automate the asset, investment accounting and investment lifecycle with a single connected solution that delivers faster reporting, drives investment strategies, satisfies investors and enables full transparency from investor through asset.



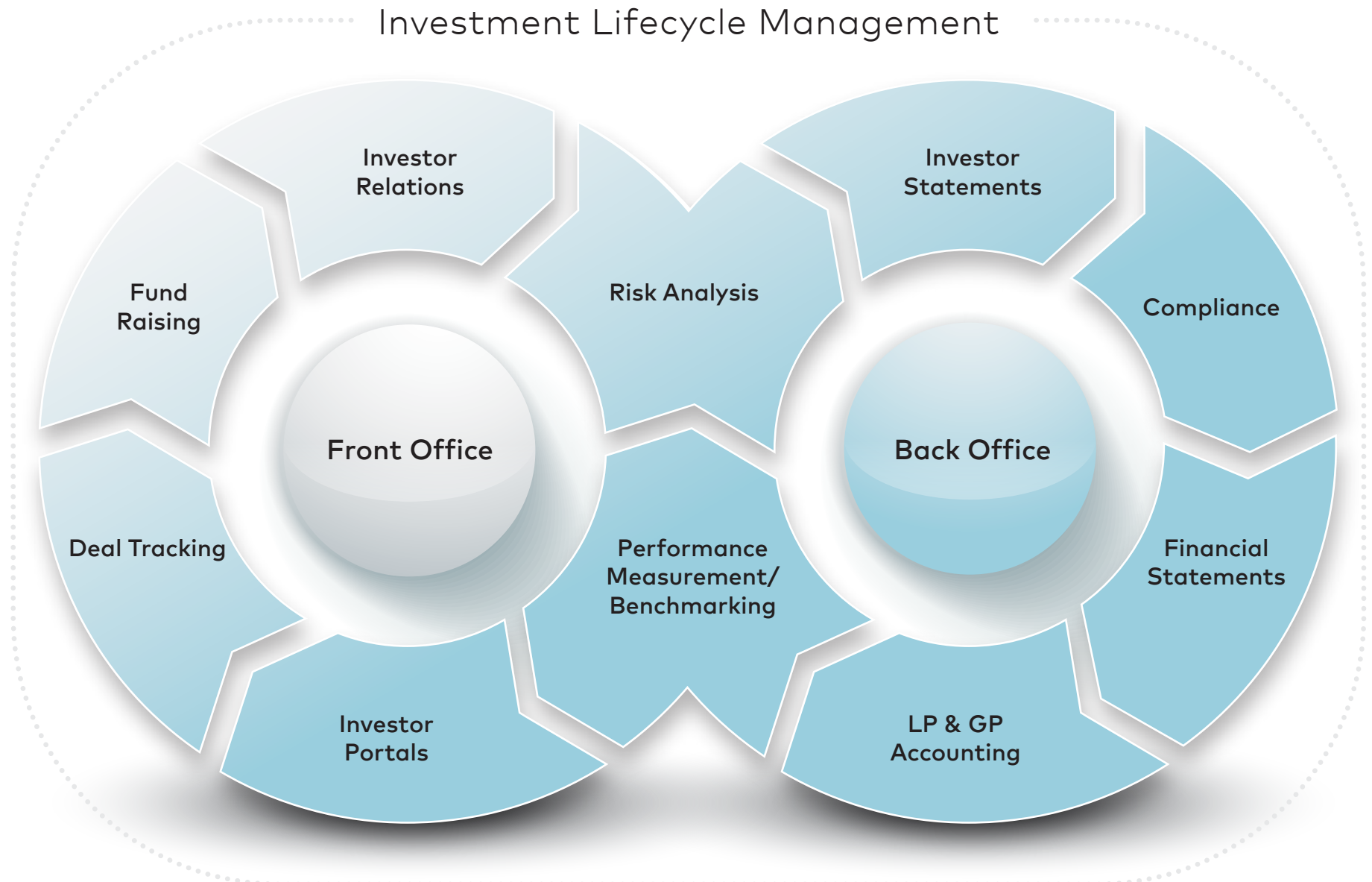
Power Your Business With a Single Connected Solution

- Integrate with Yardi Voyager for full visibility from the fund down to individual leases
- Shorten business cycles by connecting all users in one system
- Trade cumbersome spreadsheets for quick and easy mobile access to your data
- Automate processes to more easily track cash flows and perform consolidations
- Provide on-demand investor reporting with industry standard performance measurements such as GIPS and NCREIF
- Manage all investor relations, including raising capital, issuing distributions, distributing reports and calculating waterfalls
- Use intuitive presentation tools to visualize and interact with your data
- Keep your data safe and reduce costs with an award-winning cloud solutions provider
- Leverage the experience and applied knowledge of the industry leader

Yardi Investment Suite

Investment Management	1
Investment Analysis & CRM	7
Investor Services	11
Notes & Mortgages	15
Business Intelligence	19
Job Cost	23

Yardi Investment Suite



Key Benefits

- Increases productivity and reduces the risk of errors by eliminating spreadsheets and other manual, time-intensive functions
- Allows you to scale and grow your business with existing resources
- Helps mitigate investment risk with intelligent analytics from the investor through asset operations
- Provides multiple channels for communicating key performance metrics to internal and external stakeholders
- Automates complex return calculations and other custom key performance indicators and compares them to industry benchmarks
- Improves data governance and compliance by centralizing critical investment data from spreadsheets in a secure and auditable system





Investment Management

A solution that fully automates the real estate asset and investment management lifecycle and helps drive investor value.

Yardi Investment Management

Yardi Investment Management ensures your entire investment accounting, performance measurement and investor reporting cycle is automated, reducing costs and increasing operational efficiencies. When combined with the comprehensive operational accounting and management features of Yardi Voyager, our Yardi Investment Management solution provides full transparency from investor to lease.

Automated Lifecycle

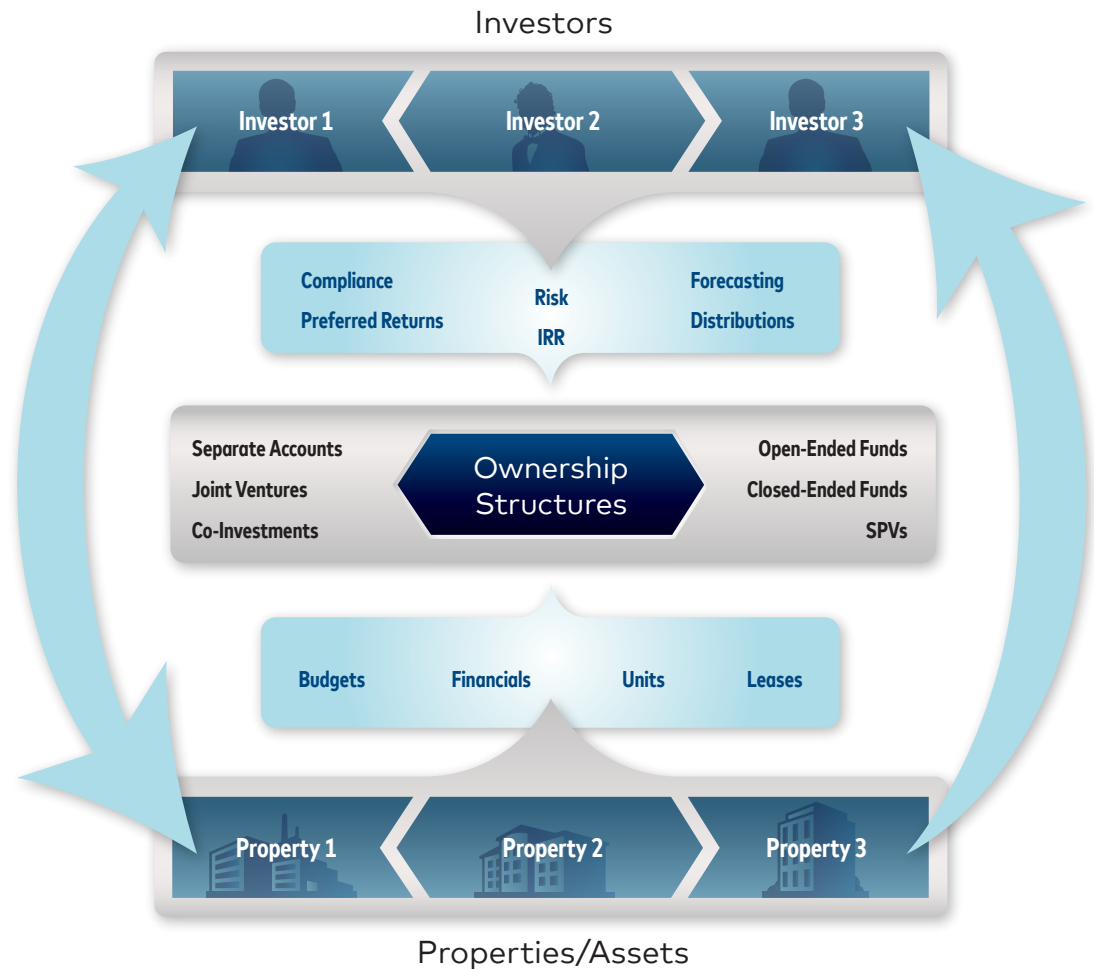
Fully automate investment accounting, performance measurement and reporting and enable managers to make better, faster, more informed decisions to benefit their clients and stakeholders. Help deliver enhanced investment performance and returns through improved, competitive services to clients and increased analytical capability. Greatly reduce period-end close and reporting cycle times and reduce risk through compliance monitoring and enhanced analytics.

Informed Risk Mitigation

Configurable financial, portfolio, performance and revenue analytics help identify exposure to invested and committed assets according to attributes such as region, sector, investment type and fund strategy. Our solution includes access to actual budget and forecast data for continual analysis of metrics at the asset, portfolio, fund and investor levels.

Enhanced Investor Reporting

Our solution allows you to utilize real-time investment accounting and operational data to provide unrivaled investor services. Deliver highly accurate investor reporting utilizing a single source of data to enable the timely delivery of detailed, reliable information to your clients. Leverage automated analytics and consolidated financial reporting drawn directly from your operational data to operate more efficiently and increase compliance and risk mitigation. Provide the transparency that instills investor confidence.



Key Features

- Easily manage complex hierarchies and deal structures
- Attain transparency from investor to lease with complete drilldown capability
- Get real-time data down to the property level to make confident decisions

Manage Complex Structures

This system is a unique investment accounting solution that will help you manage your ownership structures, no matter how simple or complex. Our solution enables both large and small investors and administrators to deliver entity-level accounting and generate statutory reporting direct from the system. With a fully automated consolidation process you can easily manage the horizontal and vertical complexities associated with numerous entities and multiple levels between funds and assets to deliver end-of-period closing with greater efficiency and much less risk.

Our investment accounting solution supports a wide range of entities and investment structures, including:

- Open- and Closed-ended Funds
- Special Purpose Entities
- Fund of Funds
- Holding Companies
- REITs
- Debt Entities
- Private Equity

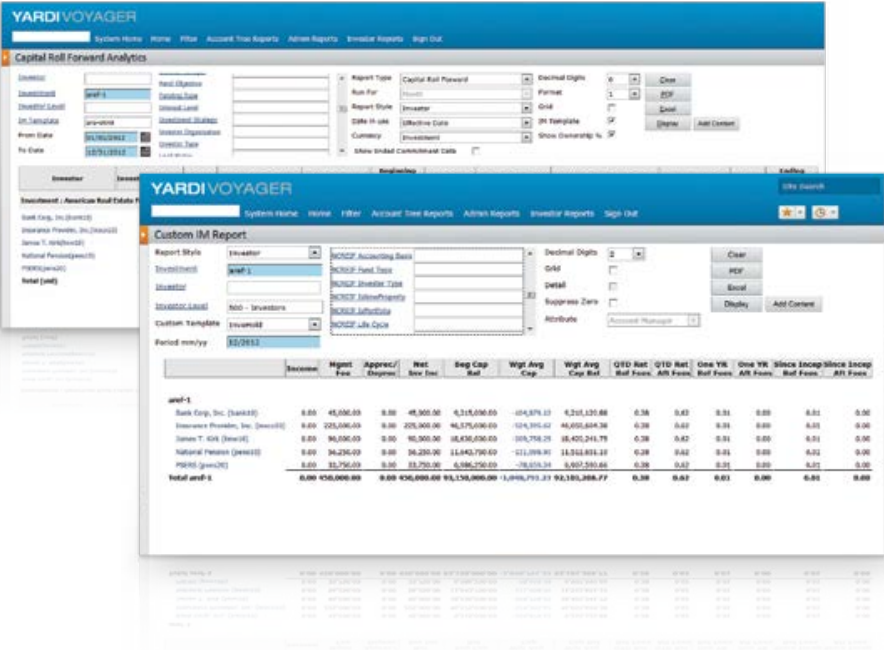


Performance Measurement

Automate analysis and submission of NCREIF, IPD and GIPS performance metrics. Compare your portfolio investment performance to industry benchmarks and internal KPIs through a rich set of real-time analytics for leveraged, unleveraged and time-weighted income and appreciation returns. Add user-defined attributes to the portfolio comparison to evaluate geographical, operational and investment indicators, providing improved clarity and accuracy when determining the market value of your assets.

On-demand Reporting

Leverage centralized investment data to automate the preparation and distribution of fund and investor-specific statements and capital call and distribution notifications. Give fund managers timely, complete information about investment performance. Generate capital call emails to any number of investors and post them on an investor portal. Create presentation-quality quarterly fund statements and investor statements.



Incentive Structures

Our solution has been uniquely designed to accommodate deal structures, no matter how simple or complex, and eliminate spreadsheets. Once defined, the system automates calculations and accounting related to your business terms. The system enables you to:

- Define multi-tiered waterfall business rules with multiple hurdles and promotes
- Quickly calculate accruals and distributions
- Determine hypothetical liquidation values for accurate unrealized gain/loss on investments
- Compute multiple allocation splits within LP and GP groupings
- Define and calculate preferred returns and management fees

Key Features

- Produce detailed, accurate performance and returns analysis
- Manage multiple currencies, languages, accounting methods and tax rules
- Automate complex consolidations and equity rollups
- Quickly calculate preferred returns and waterfall distributions
- Achieve true, single-system integration with centralized data

Complete Transparency

Achieve an unsurpassed level of transparency, made possible by the system's centralized data platform. Questions regarding underlying transaction data are quickly answered by drilling down to the operating data in Voyager. In addition, a full array of detailed reports provides a complete audit trail.

- Achieve single-system integration with a centralized data platform
- Reduce manual effort by eliminating third-party interfaces
- Get real-time data down to the property level to make confident decisions

Centralized Information

The system can access operating data in real time from your Voyager database to automate all investment calculations, transactions and reporting and can also be used as the central data warehouse to consolidate information giving complete transparency from investment to lease in one integrated environment.



Key Benefits

- Allows you to easily evaluate the investment health of portfolios, funds and assets against key performance indicators and industry benchmarks
- Enables drill down into portfolio risk and exposure by your choice of attributes with user-defined ad-hoc analysis
- Creates process efficiency with instant access to investor activities, notes and correspondence
- Allows you to monitor fund raising goals with a holistic view of prospects and proposals through configurable dashboards
- Reduces effort and saves time with convenient document and email generation tools and Microsoft® Outlook integration
- Leverages the latest in responsive design to provide easy access on any mobile device
- Automates the exchange and management of information through the acquisition and disposition process





Investment Analysis & CRM

A platform for front office users to quickly analyze investor, fund and portfolio key metrics, communicate with investors and manage fund raising and deal tracking.

Yardi InvestorPlus

Yardi InvestorPlus serves your investors and managers of funds, assets and portfolios by supporting relationship management and delivering business intelligence directly to their smartphone and tablet devices via the cloud. This front office solution's CRM functionality automatically tracks investor information, activities, tasks and correspondence. User-defined dashboards and analytic reports provide portfolio-wide transparency and help your team quickly answer inquiries at any level within your organization's investment structure.



Better Decisions

InvestorPlus puts performance data at your fund or portfolio manager's fingertips with configurable dashboards and data drilldown. Dynamically calculate returns and compare them against benchmarks with limitless attribute combinations at any investment level. Quickly respond to performance inquiries from stakeholders with confidence and pinpoint accuracy using robust filters and exportable calculations detail. With all data residing in Yardi Voyager, nothing is lost in translation.

Greater Visibility

InvestorPlus increases visibility into your fund raising activities by providing a holistic view of prospects, proposals and fund raising goals. Capture valuable contact information with unlimited user-defined attributes and convert them into leads with the click of a button. Quickly match leads to viable opportunities via robust requirement-matching tools. Track deal progress and terms through configurable dashboards tailored to every user. Once a commitment is signed, convenient links to the original proposal ensure that you never lose track of the details.

Improved Relations

Our mobile-ready solution allows your client-facing staff to manage investor activities on the go. Respond to inquiries using configurable dashboards that display key performance metrics and up-to-the-minute transactions. Generate documents, emails, tasks and events and synchronize them with Microsoft® Outlook. Record valuable meeting notes and update investor profiles from a single location, freeing your team to focus on managing relationships.



Configurable and interactive dashboards provide your management team with relevant business intelligence.

Key Features

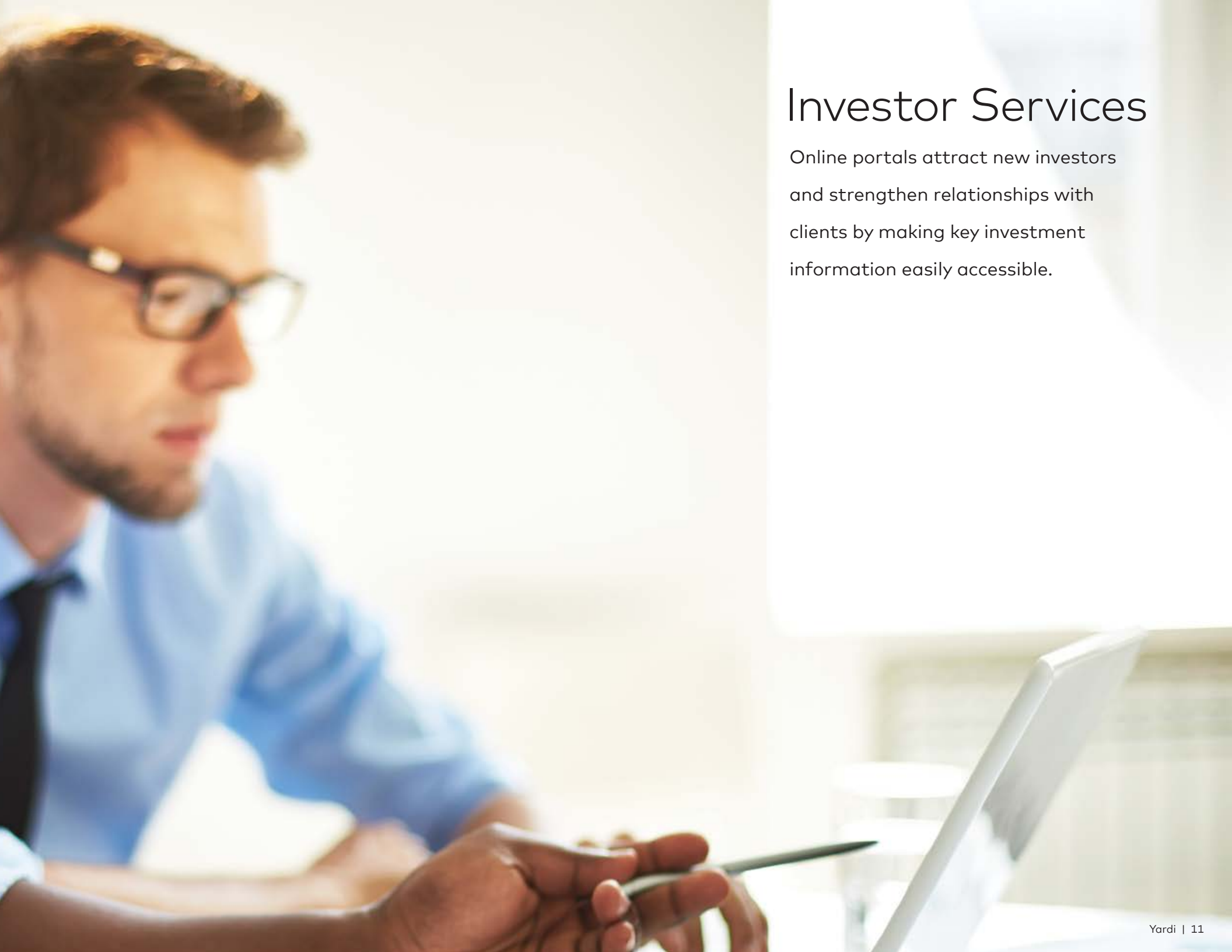
- Easy navigation to prospect and investor information via dashboards
- Real-time access to all investor and prospect-related activities
- Quick data entry with deal wizards
- Reporting and analytics across the investment lifecycle
- Outlook integration for email, contacts and calendar items
- Portal integration for real-time availability and document sharing



Key Benefits

- Simplifies investor communications
- Improves workforce efficiency with automated report publication
- Provides visibility into investor activity and document review
- Increases investor confidence and client satisfaction
- Helps track investor communication for compliance requirements





Investor Services

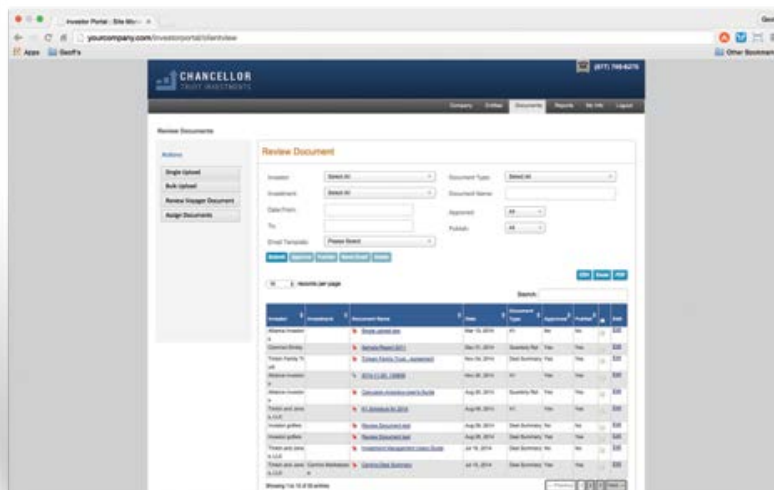
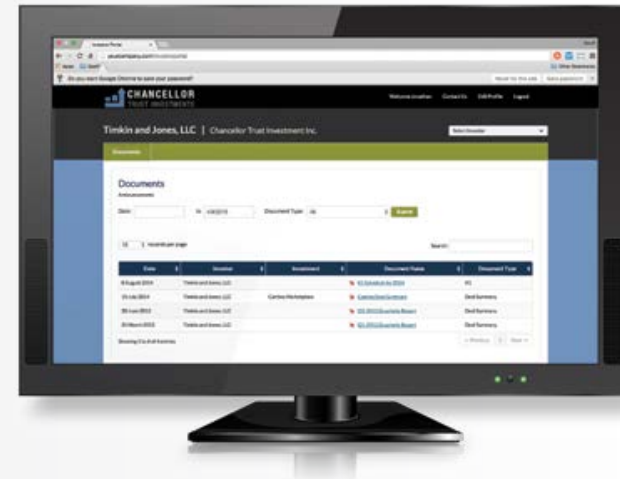
Online portals attract new investors and strengthen relationships with clients by making key investment information easily accessible.

Yardi Investor Portal

Yardi Investor Portal makes important investment information including statements, tax documents and capital call and distribution notices available online and via mobile devices. Strengthen your relationship with current and potential investors, enable investor self-service and enhance your brand. Automated reporting allows your staff to focus on value-add activities.

Investor Statements

Create timely period-end reports, investor statements, distribution notices and funding requests from Yardi Voyager using Yardi's robust spreadsheet reporting tool and automatically publish them to your investor portal. Detailed security settings allows you to grant access to investor consultants or tax preparers.



Approve, publish and notify investors that documents are ready from a single location.

Instant Notification

Use Yardi Investor Portal to automatically send an email to your investors whenever new documents are ready, passwords have been changed or investor profile information has been updated. Easily send messages to all of your investors or a subset of your investor community with customizable email templates.

Key Features

- Secure access to information for investors
- Configuration tools to insert corporate branding
- Automated bulk document upload, notification and distribution
- Detailed investor activity reports
- Integration with Yardi Investment Management facilitates automatic uploading of investor statements and communications

Monitor Activity

Stay on top of your investor portal activity with reports that allow you to see when investors have logged in, viewed or downloaded documents. Create your own permissions criteria, such as restricting access by document type, to protect your organization.



Key Benefits

- Features dashboards for at-a-glance transparency for all debt, both as an asset and a liability
- Automates notification of all critical dates
- Offers enhanced functionality for managing debt funds
- Delivers full loan servicing and accounting capabilities





Notes & Mortgages

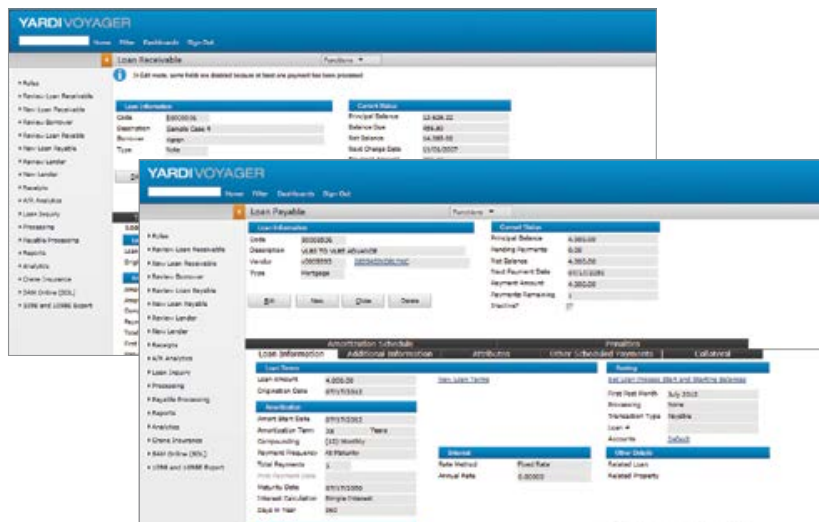
Manage debt across your portfolio with a single connected solution that accounts for all your debt and fund accounting requirements.

Yardi Notes & Mortgages

Managing notes and mortgage assets as a fiduciary carries a highly specialized set of obligations. Yardi Notes & Mortgages, a browser-agnostic, mobile Software as a Service (SaaS) platform, is specifically designed to help you meet them. Informed by more than three decades of experience delivering industry-leading property management software, this solution automates key functions including payment processing, loan management and tax and insurance obligations.

Full Compliance

Never miss critical dates with dashboards customizable to your loan management needs. The system automates Form 1098 and 1098E reporting to both the borrower and electronic filing to the IRS. It also tracks and pays property taxes and insurance on property and collateral and automates escrow payment collection and reconciliation. Dashboards provide real-time oversight of notes and mortgage information. Interfaces with tax and insurance vendors ensure prompt and accurate execution of tax and insurance payments for all of your clients.



Process loans payable and receivable on a weekly, annual or other period basis.

Automated Loan Management

Eliminate time-consuming manual processing by automating management of loans in fiduciary accounts. Built-in amortization schedules auto-adjust as the balance changes or a payment is made. Payment histories, modifications, collateral status, loan and tax records and payoff calculations are available at your fingertips. Loan amortization can be based on either 360-day, 365-day or actual day year terms and payment types including principal and interest, interest only and fixed principal plus interest.

Key Features

- Multiple payment schedules with flexible loan terms
- Escrow payment collection and reconciliation
- Built-in amortization schedules with real-time updates
- Tracks and pays insurance and taxes on collateral
- Form 1098 and 1098E interest reporting to borrower and IRS
- Monthly payment notices, including delinquent amounts

Automated Payment Processing

Yardi Notes & Mortgages handles payments for loans payable and loans receivable on a weekly, annual or other period basis. Payments and interest for loans, taxes, insurance and between trusts are automated throughout the approval process. Users can customize attributes to further define and sort loan portfolios. The system accommodates checks and recurring electronic payments. Operations dashboards instantly provide complete information.

Secure Document Management

Securely access documents and updates by linking your internal document management system to Yardi Voyager or storing the documents within the Voyager platform. Documents converted to digital files are organized, stored and accessible from within the system.

Premier Cloud Services

Leverage the experience of our award-winning Yardi Cloud Services team. The SaaS environment takes away the headache of managing applications and maintaining IT networks and replaces it with painless upgrades, preconfigured setup, secure IT infrastructure, 24/7 accessibility and full business continuity—all while reducing your overhead and capital costs.

The screenshot displays the 'Notes & Mortgage Dashboard' in the Yardi Voyager system. It features a navigation menu on the left with roles like 'Review Loan Receivable', 'New Loan Receivable', and 'Review Borrower'. The main content area includes a filter section, a 'Loans' table, and an 'Insurance, Tax and Collateral Notifications' table.

Loans	
AR Loans Past Due	\$19,751,079.41
AP Loans Past Due	\$19,874,188.15
Loans Not Processed	1,025
Active Paid Off Loans	9
Maturing AR Loans	138
Maturing AP Loans	23
Invoices Needing Approval	0
Total Loans	2,675
Open Batches	2
Memos	314

Insurance, Tax and Collateral Notifications	
Endorsements Requested	15
Endorsements Needing Removal	1
Cancelled Policies not Replaced	0
Insurance Escrow Due	2
Insurance Policies Expiring	22
Paid Off Loans Active with Tax Vendor	1
Tax Payments Due	0
Tax Verifications Due	221
Tax Verifications Delinquent	8
Collateral Documents Missing	3
UCC Expirations	0

Track the status of critical loan management functions via the dashboard.

Key Benefits

- Leverages your operational and financial data in Yardi Voyager for business-wide insight
- Helps you easily monitor operations using internal key performance indicators
- Delivers greater transparency into performance at portfolio, property and tenant levels
- Provides 24/7 access to key decision-making tools from any mobile device
- Integrates with InvestorPlus to provide transparency for investment and operational performance



Business Intelligence

Analyze the operational and financial health of your entire portfolio via simple-to-use dashboards.



Yardi Orion Business Intelligence

Yardi Orion Business Intelligence is a unique, mobile-enabled platform that can be installed and customized easily and cost-effectively. Orion features more than 200 built-in key performance indicators and powerful, flexible reports and dashboards that provide a 360-degree view of your business. Orion ensures secure access to data that helps owners and managers improve business performance yet requires dramatically less time and cost to implement than legacy business intelligence systems.

Powerful Analytics

Orion combines the financial, operational and ancillary data housed in your Yardi Voyager platform to give you a holistic view of your operations, including financials, spending, occupancy, tenant health and more. Easy-to-build dashboards utilizing drag and drop functionality support action-based monitoring of trends in tenant, property, portfolio and business-wide performance. You can perform ad-hoc analysis, dissect data and create charts with a Microsoft® Excel connection to a tabular data model built on Voyager data. Upload and publish your Excel reports and charts for others to view in Orion. You get total visibility with rich, detailed and configurable reporting and analytics—information that can be combined for unique insights and acted on to improve portfolio performance.



Dashboards with business-wide data, all at your fingertips.

Mobile Platform

Orion is a browser-agnostic, mobile-friendly platform that delivers robust reporting and dashboards to tablets. With 24/7 convenience, you can create customized views of property and tenant data through an intuitive tablet touch interface with the same customized reporting that you can generate on your desktop computer.

Key Features

- Configurable, interactive dashboards with drag-and-drop tiles and widgets
- Discussions enable users to comment about performance metrics within dashboards
- User-defined KPI targets and benchmark thresholds
- Custom SSRS reporting with Voyager analytics and ad-hoc Microsoft® Excel analysis
- Performance metrics with instant slicing, dicing and pivoting data
- Mobile accessibility across multiple devices and browsers

Custom KPIs

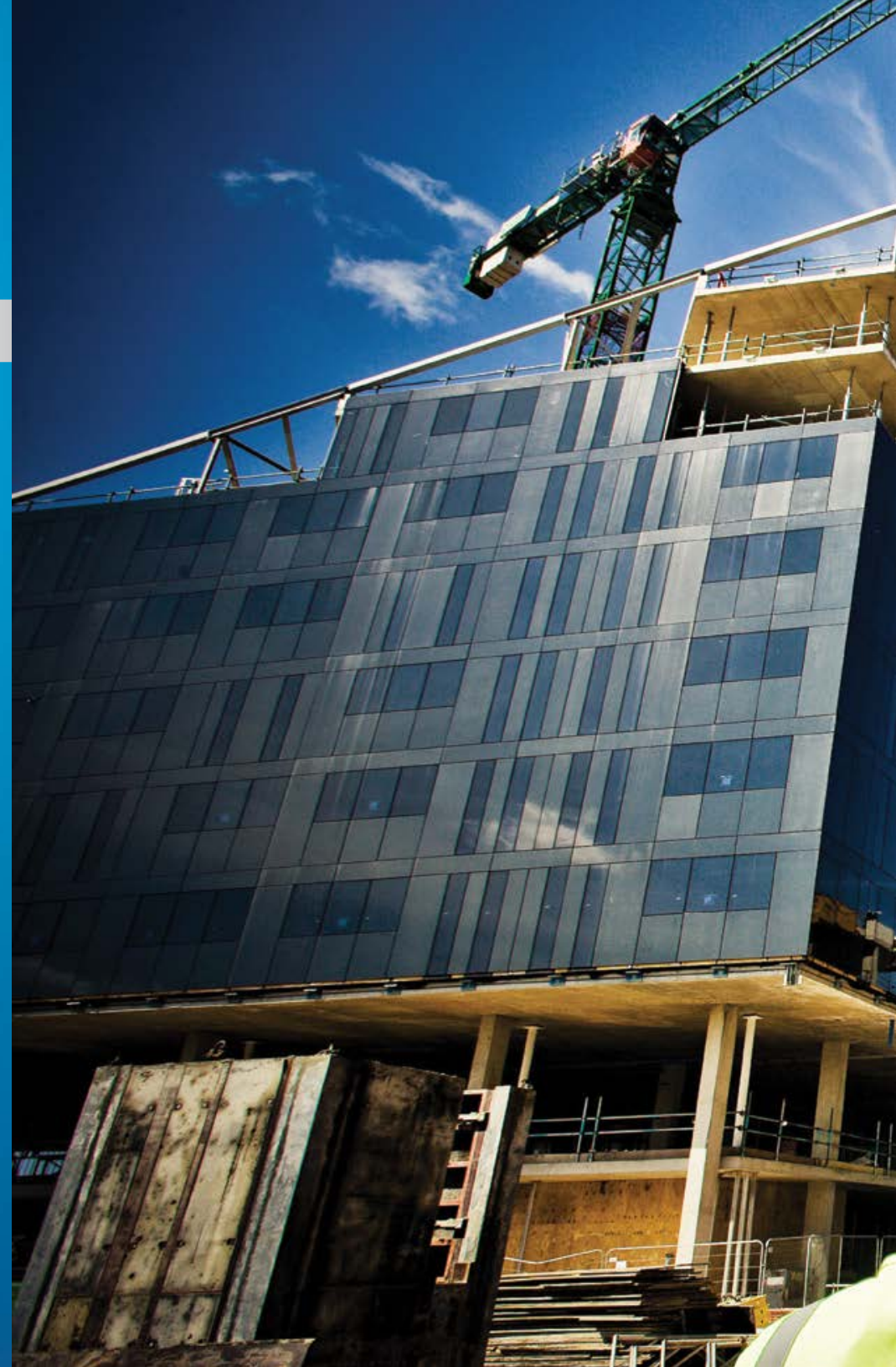
Orion includes a toolset that builds reporting content focused on the metrics you use to run your business. You can easily create your own unique set of key performance indicators based on data from tables in Voyager. You can also group and display data by attribute such as property type, region, portfolio and market. You control the data to display and how to display it: line charts, bar charts, pie charts, stacked bar charts, data grids with rankings and more. Once you create your unique measure and chart, it is easy to drag and drop it onto your dashboard.



Discussions feature allows users to add comments, tag objects and follow discussion threads and trends directly in the program.

Key Benefits

- Provides financial oversight with real-time cost, commitment and budget comparisons portfolio-wide
- Helps maintain tight cost control with automatic over-budget monitoring of every transaction
- Establishes governance with predefined workflows and rules consistent with Yardi Voyager
- Controls capital expenditure budget allocation process
- Includes extensive analytic reporting



A low-angle, wide shot of a construction site. In the foreground, the backs of several construction workers wearing white hard hats and high-visibility yellow-green vests are visible. They are looking towards a large building under construction. The building is partially covered in blue safety netting and has extensive scaffolding. In the background, a tall, classical-style building with a prominent tower is visible against a clear blue sky. A small crane or hoist is suspended in the air above the workers.

Job Cost

Improve cost control, budget oversight and profitability for construction projects of every size and description—from capital expenditures and single-unit improvements to ground-up developments.

Yardi Job Cost

Keep projects on track with heightened cost control, complete budget oversight and accurate forecasting and management of contracts, commitments and cash flow. Manage all types of construction projects including CAPEX, tenant improvements, space renovations and property development.

Construction and Development

Support projects at all phases, from pre-development to close-out, and for any duration. You can also develop financing plans and manage contract commitments, draws and progress billings from general contractors and subcontractors, and complete projected final and cash flow forecasting.

Job Costing and Budgeting

Track and compare actual costs to the job budget automatically. You get full visibility into all committed costs and change orders, with real-time job cost and general ledger updates as transactions are entered. Billing and draws can be created easily by actual costs incurred or percent complete, and charges generated automatically for recovering costs.



Comprehensive Reporting

Strengthen your reporting with comprehensive information related to budget amounts, revisions, commitments, change orders and amounts billed to date per category. Slice the data any way you like—by property, job, cost code or job attribute, among many other options.

Key Features

- Unlimited, user-defined budget cost categories with templates and models
- Full contract and change order, committed cost tracking and analysis
- Detailed, real-time recording of job costs and other actions across the entire construction lifecycle
- Multiple job cost summary and detail reports with drilldown to underlying transactions
- Custom, automated workflow approval for jobs, job budgets and revisions, contracts and change orders
- Multiple points of access for importing and exporting data
- Custom job cost analytics for creating your own reports
- Seamless integration with Voyager

Increased Flexibility

Apply user-defined workflow approvals for jobs, budgets, contracts and budget transactions. Simplify your work by hiding unused features and fields. Define your own fields for capturing pertinent data for historical purposes and reporting.

The image displays three screenshots of the YARDI VOYAGER software interface, demonstrating its flexibility and reporting capabilities.

Job Cost Analytics: This screenshot shows a summary table for job costs. The table includes columns for Job, Revised Budget, Original Contract, Contract COV, Revised Contract, Prior Billed, Billed To Date, Cost To Complete, and % Complete. The Grand Total row shows a Revised Budget of 725,000.00, an Original Contract of 0.00, a Contract COV of 0.00, a Revised Contract of 725,000.00, a Prior Billed amount of 0.00, a Billed To Date amount of 5,000.00, a Cost To Complete of 720,000.00, and a % Complete of 0.68.

Charge From Costs: This screenshot displays a detailed view of charges from costs, including a table with columns for Date, Description, Invoice Number, Invoice Date, Invoice Amt, In Charge Amt, Net Change, and Description. The Grand Total for Net Change is 1,358.00.

Payable Invoice: This screenshot shows a detailed view of a payable invoice, including fields for Invoice #, Invoice Date, Invoice Amount, and Due Date. The invoice amount is 200.00, and the due date is 01/14/2013. A table at the bottom shows the invoice details, including Contract, Job, Entity, Amount, Category, Account, Retention, Retention Account, Total, Notes, Invoice Date, and Draw Date.





Investor
value is
more than
just returns

| Energized for Tomorrow

At Yardi our mission is to provide our clients with superior products and outstanding customer service, while we take care of our employees and the communities where we work and live. With that commitment, Yardi leads the industry in providing full business software solutions for real estate investment management, property management, financial accounting, asset management and ancillary services. Organizations like yours have been using our proven and mature software with confidence for decades.

Yardi Systems, Inc. 430 South Fairview Avenue, Santa Barbara, California 93117
phone: +1 800 866 1144 | email: sales@Yardi.com | www.Yardi.com

NOTICE: Design and content ©2017 Yardi Systems, Inc. All rights reserved. Information is subject to change without notice and does not represent a commitment on the part of Yardi Systems, Inc. Voyager®, InvestorPlus™, Orion® and Yardi® are either registered trademarks or trademarks of Yardi Systems, Inc. in the United States and/or other countries. All other products mentioned herein may be trademarks of their respective companies.

