



YARDI ELEVATE

Elevate the performance of your portfolio with one connected solution for asset management.

Close better deals, faster, with an easy-to-use deal management solution for asset managers and their internal and external brokers.

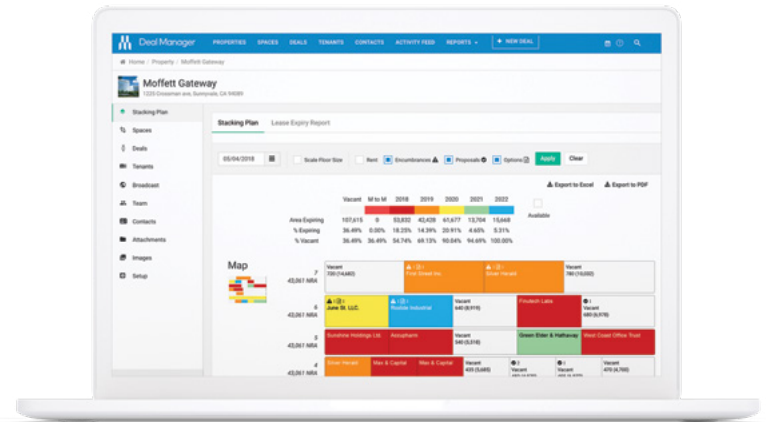
DEAL MANAGER

DEAL MANAGER

Yardi Deal Manager provides powerful deal management capabilities with an easy-to-use, mobile solution. Access up-to-date unit availability information and interactive stacking plans that sync lease-level data directly with Yardi Voyager. Centralize communication, enter deal terms, track proposals and calculate and store NER at the deal level.

SHORTEN DEAL CYCLES

Integrate all aspects of the leasing process in a single connected solution that includes customized deal management, automated workflows and approvals. Gain complete deal pipeline visibility with the most advanced solution on the market. Quickly identify tenant information and granular lease information such as rent steps, options and encumbrances. Work more efficiently and reduce errors by eliminating duplicate data entry and lease abstraction.



ENGAGE PROSPECTS

Centralize marketing efforts with space availability that Yardi Voyager automatically pushes in real time. Create attractive, white label property websites and brochures for promotion and lead acquisition.

IMPROVE COMMUNICATIONS

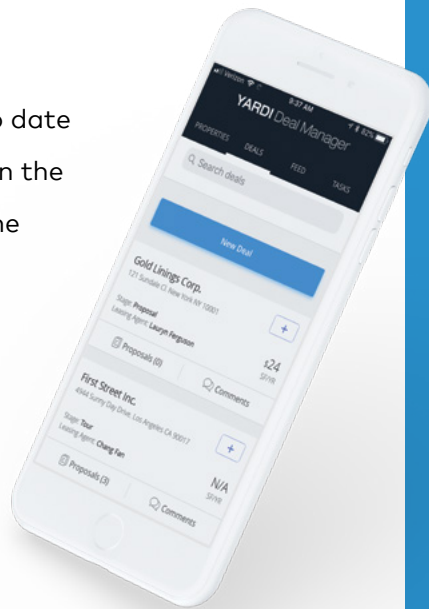
Improve tenant relations and intercompany communication about available space, existing customers and deals. Schedule tasks, assign follow-ups and track changes at the tenant, property or unit level. Comprehensive reporting capabilities seamlessly combine information from Deal Manager and Voyager into actionable insight.

TARGET SPACE

Easily search and filter spaces in your portfolio based on properties, space, square footage, occupancy, tenants and deals. Quickly identify available space and manage tenant renewals, relocations and terminations as well as tenants at risk.

GO MOBILE

Keep your contacts and leasing pipeline up to date with the Deal Manager mobile app. Agents on the go can quickly update deals, leads and pipeline data. Automatic syncing with Voyager gives your team the latest information to make confident decisions, secure approvals and receive notifications in the field leveraging the power of the Apple iOS and Android mobile operating systems.



YARDI ELEVATE

Yardi Elevate for commercial real estate is the most comprehensive asset management solution on the market. Gain in-depth operational data, streamlined revenue forecasting and unprecedented portfolio management to lower costs, balance risk and increase revenue.

DEAL MANAGER

CLOSE BETTER DEALS, FASTER

Easy-to-use deal management solution for asset managers and their internal and external brokers.

FORECAST MANAGER

FORECAST THE FUTURE

Connect leasing, asset management and finance teams to the budgeting process for more accurate forecasting.

CONSTRUCTION MANAGER

STAY ON TIME AND ON BUDGET

Real-time insight into budget performance and revenue impacts of capital projects and tenant improvements.

FACILITY MANAGER

COMMAND BUILDING PERFORMANCE

Streamline management of equipment maintenance, property inspections and service requests.

DEAL MANAGER FEATURES

- Draws real-time tenant and lease information including options, encumbrances, rent steps and rates with integrated stacking plans
- Allows deal data to flow seamlessly from front office leasing to back office lease administration via two-way integration with Yardi Voyager
- Leverages dozens of native reports, produces weekly and monthly email digests and creates custom reports to satisfy reporting requirements
- Reduces leasing cycle time with powerful approval workflows, flexible communication tools and automatic document creation
- Analyzes cash flow and compares deal proposals with MLAs and spec leases from Yardi Advanced Budgeting & Forecasting
- Integrates seamlessly with other Yardi Elevate products to increase the performance of your entire asset portfolio



NOTICE: Design and content ©2018 Yardi Systems, Inc. All rights reserved. Information is subject to change without notice and does not represent a commitment on the part of Yardi Systems, Inc., Voyager® and Yardi® are registered trademarks of Yardi Systems, Inc. in the United States and/or other countries. All other products mentioned herein may be trademarks of their respective companies. [DM 10/01/18]



Yardi Systems, Inc. | 430 South Fairview Avenue | Santa Barbara | California | 93117
phone: +1 800 866 1144 | email: Sales@Yardi.com | YardiElevate.com