

ALLEVIATE STAFFING CHALLENGES WITH SENIOR LIVING TECHNOLOGY

EXPERIENCE THE VALUE OF AN INTEGRATED CARE SOLUTION

Without technology designed for the unique needs of senior living — from EHRs to eMARs — it can be challenging to empower and retain your care staff. This ebook covers key reasons to invest in technology, leveraging the value of a fully integrated, ever-evolving solution like ours.



Why choose a single connected solution?

According to 2024 data, **two-thirds** of senior living communities are concerned they may have to close due to ongoing workforce challenges. **Over 50%** say their workforce situation has stayed the same or gotten worse in the past six months. **7 out of 10** still have fewer employees than they did before the pandemic. **46%** are limiting admissions due to labor shortages.¹

With no end in sight for these staffing challenges, it's critical to invest in tools that simplify daily tasks for your caregivers — and incentivize them to stay longer.



Relying on paper for care-related workflows isn't the answer. Whether for charting or documenting assessments, paper processes are time-consuming, error-prone and difficult to maintain.

Technology can alleviate the obstacles paper workflows create, but not when you rely on disparate solutions. If teams have to navigate multiple platforms, tasks are still time-intensive — and the risk for errors remains high.

Senior care staff face exceptional burden when these manual, inefficient processes are the norm given they're at the forefront of helping residents. This burden often translates to feeling unsupported and overwhelmed, which leads to the problem in focus: *high turnover*.

Integrated software is built to help. With a single connected solution that unites every tool needed on a single platform, you unlock time savings, reduce errors and ultimately set your caregivers up for success.



Time spent on administrative care tasks can be reduced by up to **50%** with help from effective technology.²

When your caregivers are positioned for success — with the time and tools to put residents first — boosted satisfaction and retention is the result.





Integrated care solutions equip staff to view resident information, complete daily tasks and manage communications in one intuitive place. There's no need to devote energy to taxing, manual administrative work, which allows them to focus on what matters most: resident care.



Spending sufficient time on resident care has been shown to promote both staff satisfaction and quality of care. Rushing care and not having sufficient time to meet residents' needs — on the other hand — can contribute to moral distress and burnout among staff.³

We'll show you how our comprehensive care solutions support staff best, offering differentiators like:

- ✓ Fully integrated workflows that unite on a single platform
- ✓ Designed for all types of senior living including assisted living, memory care, skilled nursing and life plan communities/ continuing care retirement communities
- ✓ Built to support value-based care (VBC) initiatives that empower staff
- ✓ HIPAA and SOX-compliance, keeping your sensitive data safe
Backed by a Forbes Cloud 100 company with 40+ years of industry experience
- ✓ Equipped with interoperability and secure interface partners
- ✓ Robust, built-in educational materials that simplify staff training and allow them to learn at their own pace, including videos, recorded webinars and job aids



Investing in EHR technology

The tools you offer caregivers drastically impact how they view their work — and how they foster a commitment to your organization. With paper-based records or antiquated technology, your staff has to spend more time on arduous administrative tasks rather than resident care.

An electronic health record (EHR) solution, on the other hand, alleviates stress and reduces wasted time, especially when it seamlessly integrates with other aspects of your business. With EHR technology digitizing health records, automating common tasks and improving care services, increased staff satisfaction — and retention — naturally follow.



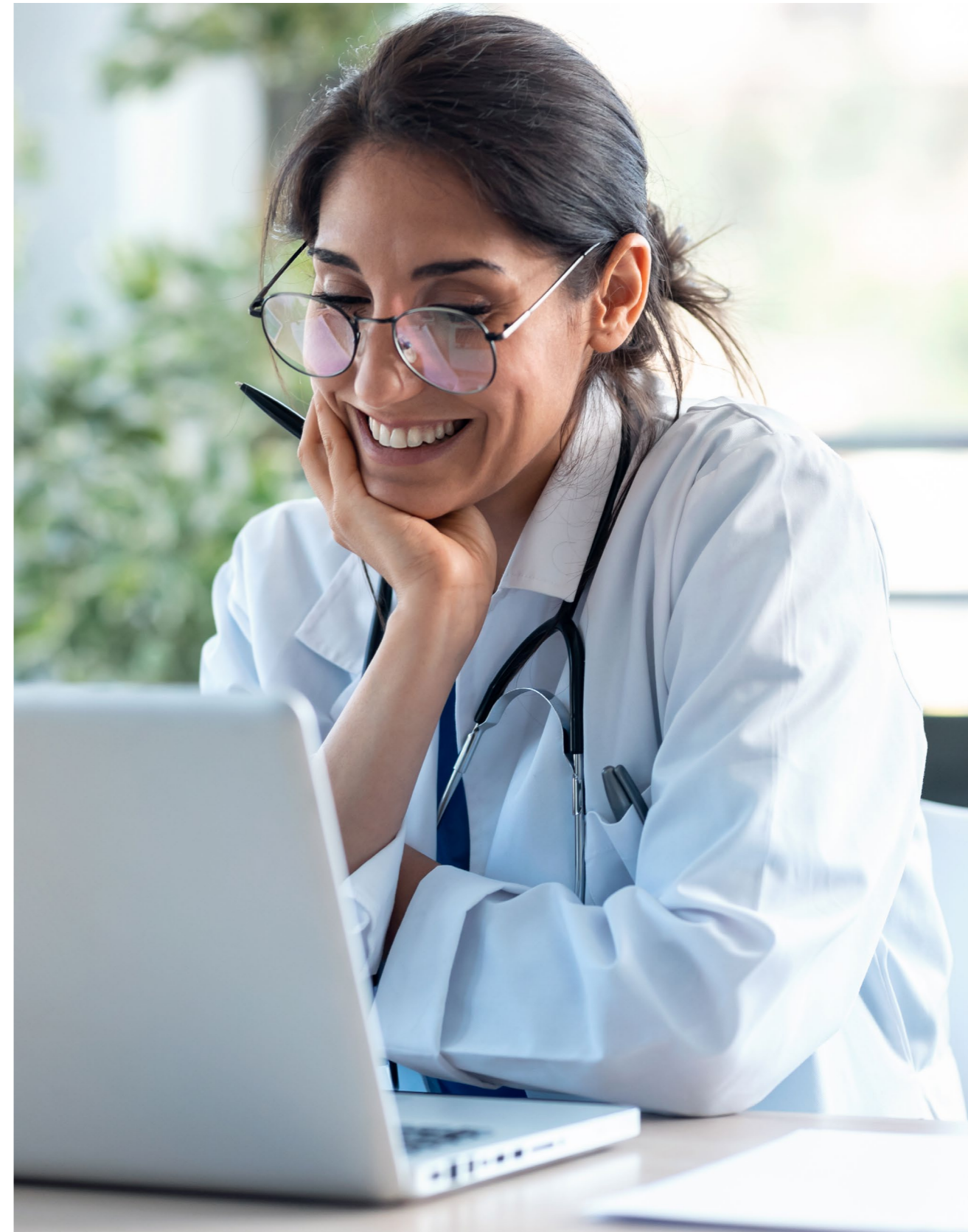
In a survey of providers, **75%** claimed their EHR equips them to deliver better care.⁴



Explore Yardi EHR

Yardi EHR is an integrated, full-service electronic health record solution designed for senior living. It combines your clinical intake processing, charting, resident assessments, care planning, behavior management and more in one secure place.

- ✓ Gain executive health care oversight with advanced clinical reporting, centralized resident records, detailed analytics and instant access to financial data
- ✓ Streamline daily tasks by giving teams access to real-time health information and convenient workflows, readily available at the point of care
- ✓ Help caregivers spend more time with residents and prevent errors with simplified record keeping, easy information sharing and reduced data-entry tasks
- ✓ Unlock customizable dashboards and reports that help caregivers stay on top of resident care and improve health outcomes
- ✓ Access comprehensive clinical data and a staffing analysis workflow when you pair Yardi EHR with Yardi Senior IQ, a business intelligence powerhouse



Adding an eMAR solution

Paper workflows and siloed databases pose problems for medication passing given caregivers have to manually manage orders, check for errors and track communications with pharmacies. This can generate more burden — and burnout — making it increasingly challenging to retain your workforce.

When you build on the power of EHR technology with an integrated electronic medication administration record (eMAR) solution, you ensure seamless, secure medication passing. Not to mention, you enable your staff and pharmacies to work together with ease. Improved collaboration and reduced medication errors can drastically promote satisfaction among your caregivers — leading to better retention.



eMAR technology can lead to a **41%** reduction in incorrect dosing and a **51%** reduction in adverse drug events associated with those errors.⁵



Explore Yardi eMAR

Yardi eMAR is a comprehensive medication management solution built for senior living. It streamlines medication passing and facilitates seamless communication between pharmacies, care staff and senior management, all on a single platform.

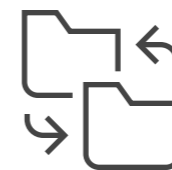
- ✓ Reduce paper documentation, processing time and expenses thanks to web-based records that eliminate manual medication reconciliation
- ✓ Prevent errors with a customizable dashboard and workflows that adhere to state regulations and promote compliance
- ✓ Enhance resident care by using intuitive workflows to document and review vital sign data, lab orders and results, medication, treatment and more
- ✓ Gain a competitive edge with access to pharmacies that are part of the Yardi Pharmacy Network
- ✓ Eliminate discrepancies between care plans and medication administration, ensuring accurate staff shift assignments
- ✓ Align care plans to medication service delivery



Prioritizing interoperability

Without interoperability — the ability for information systems to seamlessly exchange data with one another — EHRs aren't offering the maximum benefit. When the interoperability piece is missing, your caregivers still face manual data entry, and information from outside providers may get lost in the shuffle, dramatically increasing the risk for negative outcomes.

An interoperable EHR elevates efficiencies by giving all parties access to accurate, readily updated resident health data. Your staff saves time and avoids errors, equipping them to better support resident care outcomes. This further contributes to reducing stress, burnout and turnover.



80% of surveyed providers say the inability to share data between information systems leads to inefficiencies and increased stress levels.⁶



Explore Yardi interface partners

Yardi EHR allows for advanced clinical integrations across an ecosystem of partners that support your staff and enable proactive care. These integrations allow for better outcomes and tightly integrated clinical models.

Kno2 provides the foundational connection to the broader health care system, streamlining transitions of care and providing coordination with outside care providers, Health Information Exchanges (HIEs) and health systems. It offers access to cloud faxing, as well as direct secure messaging with physicians, hospitals and referral networks.

A broad ecosystem of HL7 FHIR-enabled connections support staff by providing monitoring and predictive intervention recommendations, and they support overall resident well-being.

Our interface partners cover:

- ✓ Health systems and third-party providers
- ✓ Fall risk
- ✓ Care delivery monitoring
- ✓ Social isolation
- ✓ Vitals collection
- ✓ Care coordination
- ✓ Nurse call
- ✓ Infection control
- ✓ And more



See real successes

For Stage Management, our solutions generate **8+ hours of time savings** across daily caregiver shifts, **\$1,000+ in paper savings** annually, **improved staff morale** and more.

“ Because of Yardi EHR, all of our caregivers are able to spend more time with the residents. That’s really what it’s all about. ”

TROY MCCLYMONDS
MANAGING PARTNER | STAGE MANAGEMENT



Start your journey with Yardi

Ready to power your workforce strategy from one platform? Reach out for a personalized demo.

Sources

1. [American Health Care Association](#)
2. [McKinsey & Company](#)
3. [McKinsey & Company](#)
4. [Health IT](#)
5. [LeadingAge](#)
6. [Athenahealth](#)

